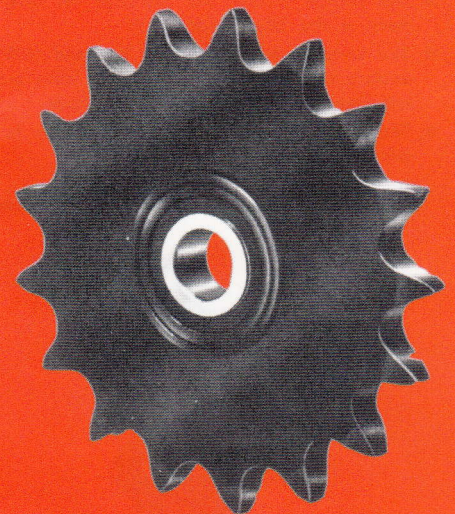
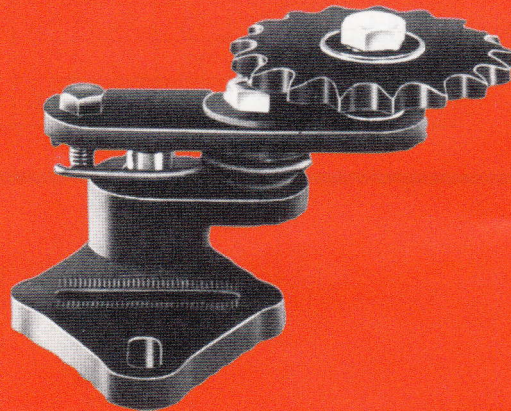
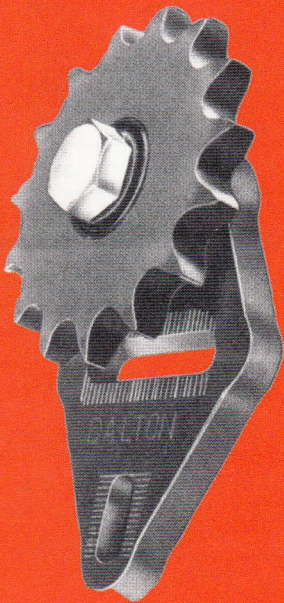


# DALTON<sup>®</sup>

## DRIVE TENSIONERS IDLER SPROCKETS

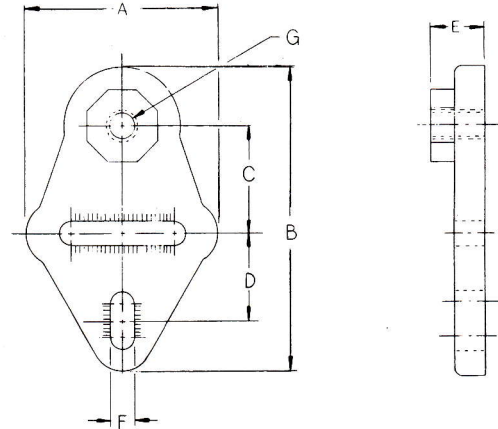
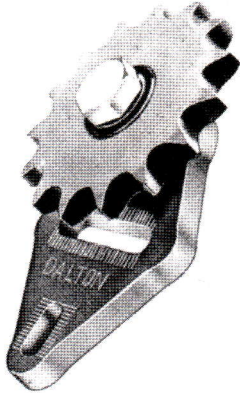


# DALTON<sup>®</sup> gear company

212 COLFAX AVENUE N., MINNEAPOLIS, MINN. 55405 • 612-374-2150

DISTRIBUTED BY





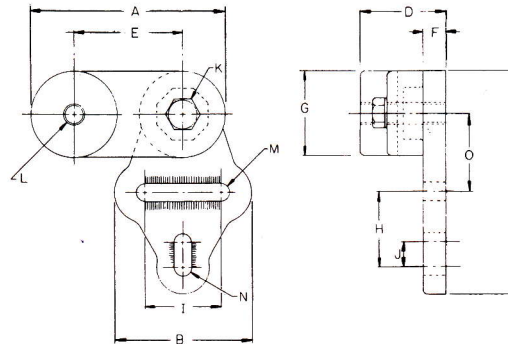
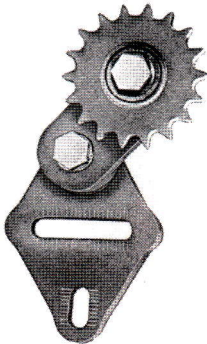
See page 6 for Idler Sprockets

## BASE PAD WITH TENSION SLOT

with these valuable qualities:

- ★ The mounting slots have grooved edges that prevent movement when used with Dalton Lock Washers.
- ★ The slotted mounting bolt holes will allow for a 1/4" deviation in mounting bolt distances.
- ★ The Dalton tension slot provides for fine adjustment of the idler's position.
- ★ The versatile base pad can be used with a secondary arm or spring adapter to form tensioners with more varied tensioning capacity.
- ★ Tensioners are made of ductile iron to insure strength.

MODEL NUMBER	A	B	C	D	E	F	G	BOLT SIZE	WEIGHT IN POUNDS	LIST PRICE
1B-3	2	3 1/4	1 1/4	1 5/16	3/4	1/4	3/8	1 1/4 x 3/8	.5	19.60
2B-4	3 1/2	5	1 5/8	1 7/8	1 5/16	3/8	1/2	1 1/2 x 1/2	1.8	25.20
2B-5	3 1/2	5	1 5/8	1 7/8	1 5/16	3/8	5/8	1 1/2 x 5/8	1.85	25.80
2B-6	3 1/2	5	1 5/8	1 7/8	1 5/16	3/8	3/4	1 1/2 x 3/4	1.9	29.00
D2B-4	3 1/2	5	1 5/8	1 7/8	1 5/16	3/8	1/2	2 x 1/2	1.9	26.80
D2B-5	3 1/2	5	1 5/8	1 7/8	1 5/16	3/8	5/8	2 x 5/8	2.0	27.20
D2B-6	3 1/2	5	1 5/8	1 7/8	1 5/16	3/8	3/4	2 1/2 x 3/4	2.0	31.00



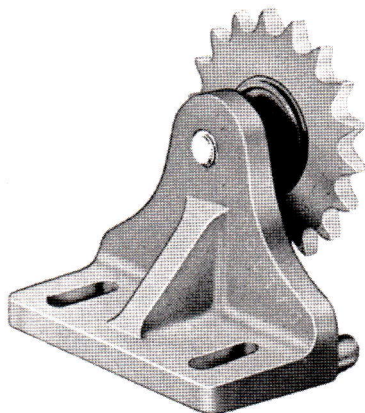
See page 6 for Idler Sprockets

## SECONDARY ADJUSTING ARM WITH BASE

with several important features:

- ★ The octagon mounting head allows for rough adjustment in any direction. Fine adjustments are achieved by movement of the base using the slots. The position of the mounting head in relation to the slots allows for greater adjusting movement than competitive models.
- ★ Dalton positioners are made of 60-45-10 ductile iron which insures strength and wear resistance.
- ★ Mounting of idlers is achieved by using high strength bolts which secure the inner race of Dalton idler bearings to the positioner.

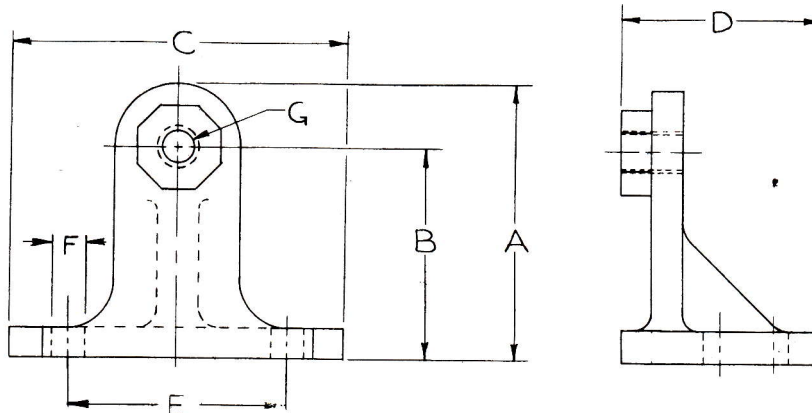
MODEL NUMBER	A	B	C	D	E	F	G	H	I	J	K	L	M	N	O	LIST PRICE
1SB-3	2 1/2	2	3 1/4	1 3/8	1 5/16	1/2	1 1/4	1 5/16	1	1/4	9/16	3/8	1/4	1/4	1 1/4	57.00
2SB-4	3 13/16	3 1/2	5	2	2 1/8	1/2	1 11/16	1 7/8	1 7/8	1/2	3/4	1/2	3/8	3/8	1 5/8	61.00
2SB-5	3 13/16	3 1/2	5	2	2 1/8	1/2	1 11/16	1 7/8	1 7/8	1/2	3/4	5/8	3/8	3/8	1 5/8	61.80
2SB-6	3 13/16	3 1/2	5	2	2 1/8	1/2	1 11/16	1 7/8	1 7/8	1/2	3/4	3/4	3/8	3/8	1 5/8	64.60
D2SB-4	3 13/16	3 1/2	5	2	2 1/8	1/2	1 11/16	1 7/8	1 7/8	1/2	3/4	1/2	3/8	3/8	1 5/8	62.00
D2SB-5	3 13/16	3 1/2	5	2	2 1/8	1/2	1 11/16	1 7/8	1 7/8	1/2	3/4	5/8	3/8	3/8	1 5/8	63.00
D2SB-6	3 13/16	3 1/2	5	2	2 1/8	1/2	1 11/16	1 7/8	1 7/8	1/2	3/4	3/4	3/8	3/8	1 5/8	66.60



See page 6 for Idler Sprockets

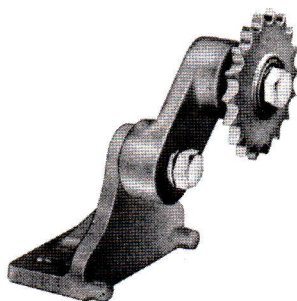
with these valuable features:

- ★ The Angular base has slotted mounting bolt holes that permit alignment of the Idler.
- ★ The Angular base is designed for use with the secondary adjusting arm or spring adapter unit when additional tensioning capabilities are required.
- ★ The Angular Base Tensioner is made of high quality Ductile Iron for extra strength.
- ★ The Angular Base is painted with Dalton's special paint to prevent rusting.



## ANGULAR BASE

MODEL NUMBER	A	B	C	D	E	F	G	LENGTH OF BOLT	WT.	LIST PRICE
1A-3	2 <sup>5</sup> / <sub>16</sub>	1 <sup>11</sup> / <sub>16</sub>	2 <sup>1</sup> / <sub>4</sub>	1 <sup>3</sup> / <sub>8</sub>	1 <sup>1</sup> / <sub>2</sub>	<sup>1</sup> / <sub>4</sub>	<sup>3</sup> / <sub>8</sub>	1 <sup>1</sup> / <sub>4</sub>	.5	26.00
2A-4	3 <sup>1</sup> / <sub>4</sub>	2 <sup>1</sup> / <sub>2</sub>	4	2 <sup>1</sup> / <sub>2</sub>	2 <sup>5</sup> / <sub>8</sub>	<sup>3</sup> / <sub>8</sub>	<sup>1</sup> / <sub>2</sub>	1 <sup>1</sup> / <sub>2</sub>	1.85	28.00
2A-5	3 <sup>1</sup> / <sub>4</sub>	2 <sup>1</sup> / <sub>2</sub>	4	2 <sup>1</sup> / <sub>2</sub>	2 <sup>5</sup> / <sub>8</sub>	<sup>3</sup> / <sub>8</sub>	<sup>5</sup> / <sub>8</sub>	1 <sup>1</sup> / <sub>2</sub>	1.85	28.40
2A-6	3 <sup>1</sup> / <sub>4</sub>	2 <sup>1</sup> / <sub>2</sub>	4	2 <sup>1</sup> / <sub>2</sub>	2 <sup>5</sup> / <sub>8</sub>	<sup>3</sup> / <sub>8</sub>	<sup>3</sup> / <sub>4</sub>	1 <sup>1</sup> / <sub>2</sub>	1.85	31.80
D2A-4	3 <sup>1</sup> / <sub>4</sub>	2 <sup>1</sup> / <sub>2</sub>	4	2 <sup>1</sup> / <sub>2</sub>	2 <sup>5</sup> / <sub>8</sub>	<sup>3</sup> / <sub>8</sub>	<sup>1</sup> / <sub>2</sub>	2	1.85	29.64
D2A-5	3 <sup>1</sup> / <sub>4</sub>	2 <sup>1</sup> / <sub>2</sub>	4	2 <sup>1</sup> / <sub>2</sub>	2 <sup>5</sup> / <sub>8</sub>	<sup>3</sup> / <sub>8</sub>	<sup>5</sup> / <sub>8</sub>	2	1.85	30.04
D2A-6	3 <sup>1</sup> / <sub>4</sub>	2 <sup>1</sup> / <sub>2</sub>	4	2 <sup>1</sup> / <sub>2</sub>	2 <sup>5</sup> / <sub>8</sub>	<sup>3</sup> / <sub>8</sub>	<sup>3</sup> / <sub>4</sub>	2 <sup>1</sup> / <sub>2</sub>	1.90	33.80

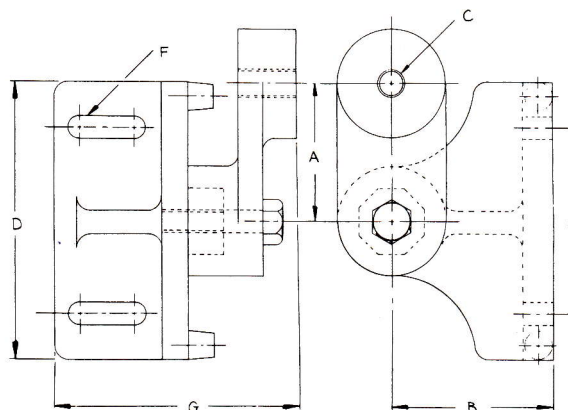


See page 6 for Idler Sprockets

## SECONDARY ADJUSTING ARM WITH ANGULAR BASE

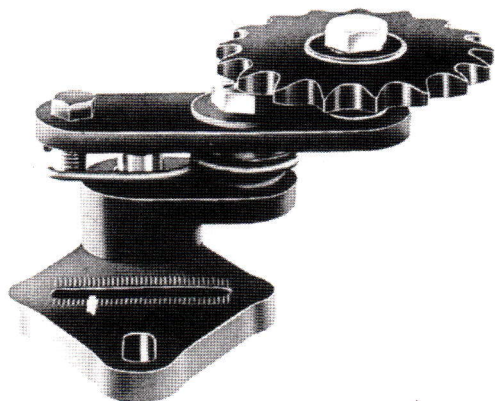
with these valuable features:

- ★ The secondary arm provides for greater tensioning capabilities in that its position on the Angle base is adjustable.
- ★ The secondary arm increases the distance from the mounting surface. This permits the use of idlers with an outside diameter greater than 4<sup>1</sup>/<sub>2</sub> inches.
- ★ This unit is also made of high strength Ductile iron and is painted with Dalton's special paint to prevent rust.

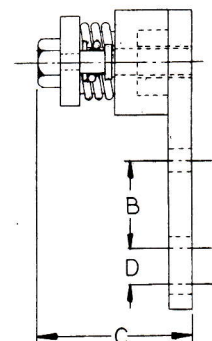
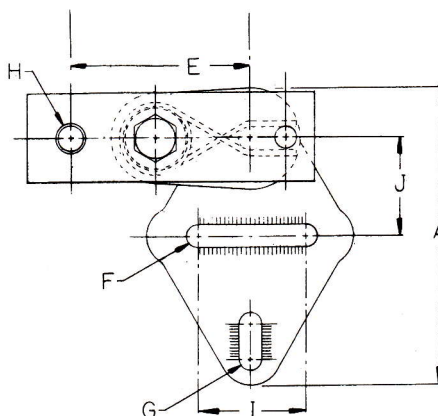


MODEL NUMBER	A	B	C	D	E	F	G	LIST PRICE
1SA-3	1 <sup>3</sup> / <sub>8</sub>	1 <sup>5</sup> / <sub>8</sub>	<sup>3</sup> / <sub>8</sub>	2 <sup>1</sup> / <sub>4</sub>	1 <sup>1</sup> / <sub>2</sub>	<sup>1</sup> / <sub>4</sub>	2	57.00
2SA-4	2 <sup>1</sup> / <sub>4</sub>	2 <sup>1</sup> / <sub>2</sub>	<sup>1</sup> / <sub>2</sub>	4	2 <sup>5</sup> / <sub>8</sub>	<sup>3</sup> / <sub>8</sub>	3 <sup>3</sup> / <sub>8</sub>	61.00
2SA-5	2 <sup>1</sup> / <sub>4</sub>	2 <sup>1</sup> / <sub>2</sub>	<sup>5</sup> / <sub>8</sub>	4	2 <sup>5</sup> / <sub>8</sub>	<sup>3</sup> / <sub>8</sub>	3 <sup>3</sup> / <sub>8</sub>	61.80
2SA-6	2 <sup>1</sup> / <sub>4</sub>	2 <sup>1</sup> / <sub>2</sub>	<sup>3</sup> / <sub>4</sub>	4	2 <sup>5</sup> / <sub>8</sub>	<sup>3</sup> / <sub>8</sub>	3 <sup>3</sup> / <sub>8</sub>	64.60
D2SA-4	2 <sup>1</sup> / <sub>4</sub>	2 <sup>1</sup> / <sub>2</sub>	<sup>1</sup> / <sub>2</sub>	4	2 <sup>5</sup> / <sub>8</sub>	<sup>3</sup> / <sub>8</sub>	3 <sup>3</sup> / <sub>8</sub>	61.80
D2SA-5	2 <sup>1</sup> / <sub>4</sub>	2 <sup>1</sup> / <sub>2</sub>	<sup>5</sup> / <sub>8</sub>	4	2 <sup>5</sup> / <sub>8</sub>	<sup>3</sup> / <sub>8</sub>	3 <sup>3</sup> / <sub>8</sub>	63.20
D2SA-6	2 <sup>1</sup> / <sub>4</sub>	2 <sup>1</sup> / <sub>2</sub>	<sup>3</sup> / <sub>4</sub>	4	2 <sup>5</sup> / <sub>8</sub>	<sup>3</sup> / <sub>8</sub>	3 <sup>3</sup> / <sub>8</sub>	66.60





See page 6 for Idler Sprockets

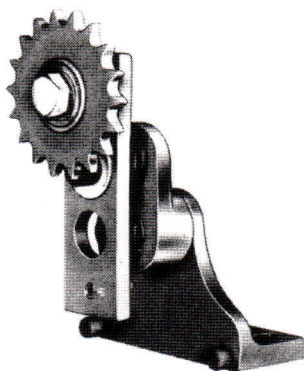


## SPRING TENSIONER ON BASE PAD

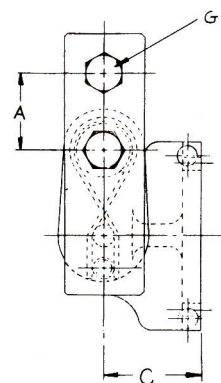
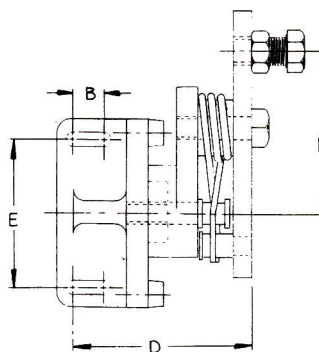
with these valuable features:

- ★ This unit has the advantages of the Base Pad Tensioner with an attachment for a spring actuated tensioner.
- ★ The simplicity of design permits great flexibility in application. The spring loaded arm can be adjusted in 8 secure positions that permit operation in all directions.
- ★ The compact construction facilitates mounting where space is at a premium.

MODEL NUMBER	A	B	C	D	E	F	G	H	I	J	LIST PRICE
RSPB4	5	1½	2⅞	½	2⅝	⅜	⅜	½	1⅞	1⅝	88.00
RSPB5	5	1½	2⅞	½	2⅝	⅜	⅜	⅝	1⅞	1⅝	91.20
RSPB6	5	1½	2⅞	½	2⅝	⅜	⅜	¾	1⅞	1⅝	94.00



See page 6 for Idler Sprockets



## SPRING TENSIONER ON ANGULAR BASE

with these valuable features:

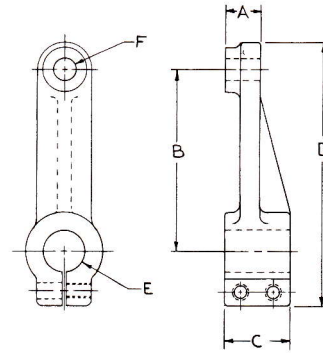
- ★ This unit provides tensioning and positioning in cases where the mounting surface angle will not permit the use of a base mount tensioner. An excellent use for this tensioner is to allow chain drives to pass over or under obstacles.
- ★ The movable spring attachment can be adjusted for flexibility in mountings.
- ★ A standard Angular base is used with the spring attachment. The advantages of this base add flexibility to this unit.

MODEL NUMBER	A	B	C	D	E	F	G	LIST PRICE
RSPA4	1½	½	2½	4	2⅝	2⅝	½	94.00
RSPA5	1½	½	2½	4	2⅝	2⅝	⅝	97.20
RSPA6	1½	½	2½	4	2⅝	2⅝	¾	100.00





See page 6 for Idler Sprockets



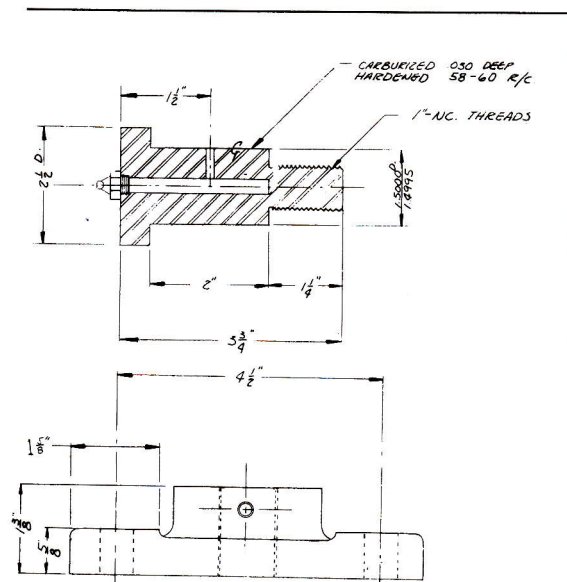
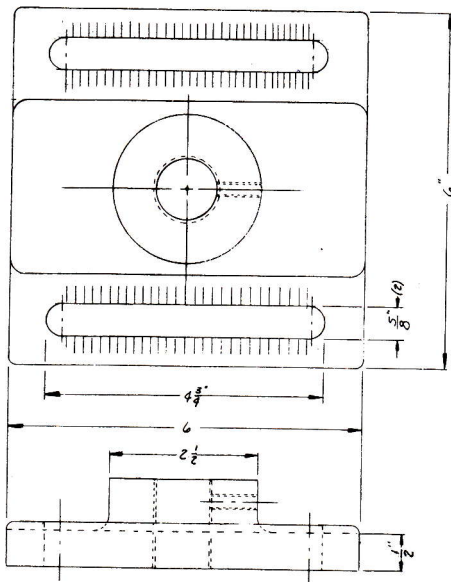
## SHAFT MOUNTED TENSIONER

Advantages of the Dalton Shaft Mounted Tensioner:

- ★ No stripped out threads in the split base because 2 locking screws are used in a strong Ductile iron base.
- ★ No slippage on mounting shaft occurs because the locking screws insure a firm and uniform lock on the mounting shaft.
- ★ The split base is available with a one inch shaft size as stock and can be supplied for other shaft sizes upon request.

MODEL NUMBER	A	B	C	D	E	F	LENGTH OF BOLT	LIST PRICE
8SM-4	$1\frac{3}{16}$	4	$1\frac{1}{2}$	$5\frac{7}{8}$	1	$\frac{1}{2}$	$1\frac{1}{2}$	45.00
8SM-5	$1\frac{3}{16}$	4	$1\frac{1}{2}$	$5\frac{7}{8}$	1	$\frac{5}{8}$	$1\frac{1}{2}$	46.00
8SM-6	$1\frac{3}{16}$	4	$1\frac{1}{2}$	$5\frac{7}{8}$	1	$\frac{3}{4}$	$1\frac{1}{2}$	49.00
D8SM-4	$1\frac{3}{16}$	4	$1\frac{1}{2}$	$5\frac{7}{8}$	1	$\frac{1}{2}$	2	46.20
D8SM-5	$1\frac{3}{16}$	4	$1\frac{1}{2}$	$5\frac{7}{8}$	1	$\frac{5}{8}$	2	46.40

## ADJUSTABLE FLANGE MOUNTED TENSIONER - HEAVY DUTY



1. The slotted base in this flange mounted tensioner is an important feature of this unit in that it allows for adjustment of the idler's position and can be used to adjust chain tension.
2. The mounting slots have grooved edges to prevent unwanted movement of the flange mount.
3. The special Dalton shaft has hardened and ground surfaces to permit the use of needle bearing idler sprockets.
4. Large pitch idler sprockets are made to fit this shaft so that no set collars or spacers are required.

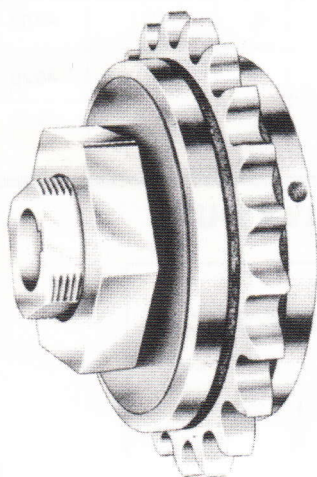
PART NAME	PART NO.	LIST PRICE
Flange Mount with Shaft	FM600C	104.00
Flange Mount (only)	FM600	56.00
Dalton Shaft (only)	6C	54.00

SPROCKET PRICES ARE QUOTED UPON REQUEST

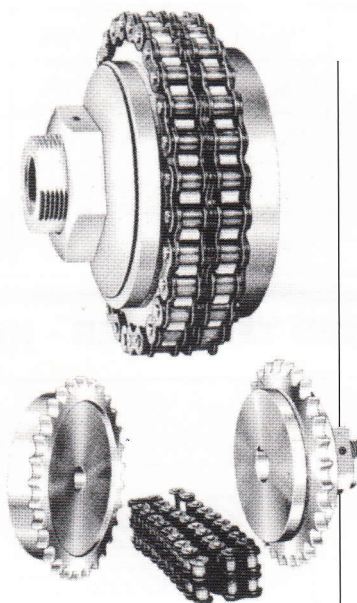


# - Insure against downtime - Protection for excessive shock and overloads

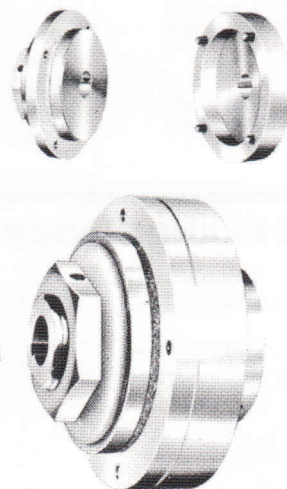
• FROM 12 INCH POUNDS TO  
66,000 INCH POUNDS OF TORQUE



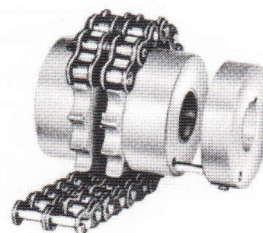
**MODEL OSD\***  
BASIC OVERLOAD  
SAFETY DEVICE  
Can be used with sprocket,  
gear, belt-pulley, or flange.  
\*Patent No. 3,092,983



**MODEL OSDC\***  
FLEXIBLE OVERLOAD  
SAFETY COUPLING  
Basic OSD unit combined  
with a roller chain  
coupling half counter  
bored to fit the OSD  
flange. Standard double-  
width roller chain couples  
the basic OSD unit and  
the coupling shaft.  
\*Patent No. 2,659,220



**MODEL ROSPC\***  
RIGID OVERLOAD  
SAFETY COUPLING  
Basic OSD unit combined  
with a special coupling  
half counter bored to fit  
the OSD flange. Basic unit  
and coupling half are  
bolted together to form  
a rigid mounting.  
\*Patent applied for



**MODEL RCSPC\***  
ROLLER CHAIN SHEAR  
PIN COUPLING  
The coupling halves are  
hobbed with a special  
tooth form and hardened  
45 to 50 Rockwell "C."  
Roller chain couplings are  
unsurpassed by any other  
coupling. Standard  
sprockets should not be  
used for coupling  
applications.  
\*Patent applied for

## PROTECT BETTER ... LONGER

Costly equipment deserves the  
finest protection! Dalton OSD  
Torque Limiters offer an  
extra margin in quality and  
reliability ... yet cost no more!

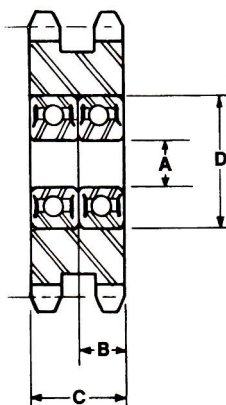
- Flanges are precision machined forgings of high carbon steel ... lasts far longer than cheaper castings.
- Simple single nut adjustment applies equal all-over pressure on clutch facings ... saves time, eliminates uneven settings.
- Specially made sprockets are surface ground to approx. 32 micro finish for more uniform torque control.
- Clutch facings are selected and treated to resist expansion due to moisture.
- Torrington needle bearings prevent shaft scoring, seizing and wear ... assure positive release at set limit.



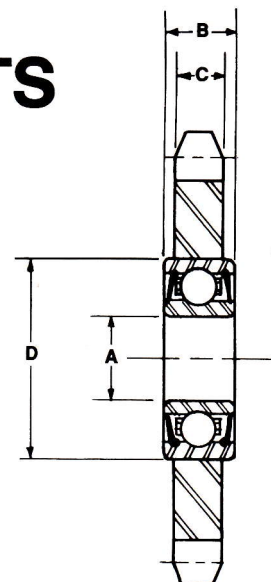
# DALTON®

## BALL BEARING IDLER SPROCKETS

- **PRECISION SEALED BALL BEARINGS** offer superior performance
- **SUPPLIED WITH HARDENED OR UNHARDENED TEETH** in convenient bore sizes.



DOUBLE STRAND  
SPROCKET



SINGLE STRAND  
SPROCKET

Idler No.	Sprocket Number	A.S.A. Chain Number	Pitch	No. of Teeth	A Stock Bores .0000 -.0005	B Bearing Width	C Sprocket Width	D Bearing OD	Bearing Radial Load Rating @ 500 rpm	List Price Not Hard-ened	List Price Hard-ened
101	25A20	25	1/4	20	3/8	5/16	.110	29/32	144	\$ 23.00	\$ 27.00
102	35A19	35	3/8	19	3/8, 1/2	3/8	.168	1 1/8	251	23.75	27.50
103	41A18	41	1/2	18	1/2, 5/8	7/16	.227	1 3/8	476	26.75	30.25
104	40A18	40	1/2	18	1/2, 5/8	7/16	.284	1 3/8	476	26.75	30.25
105	50A17	50	5/8	17	1/2, 5/8	7/16	.343	1 3/8	476	27.50	31.50
106	60A15	60	3/4	15	1/2, 5/8	7/16	.459	1 3/8	476	29.00	33.25
108	80A12	80	1	12	3/4	39/64	.575	1 25/32	958	44.00	49.00
202	D35A19	35-2	3/8	19	1/2, 5/8	7/16	.561	1 3/8	476	70.00	74.50
204	D40A18	40-2	1/2	18	1/2, 5/8	*	.841	1 3/8	952	92.00	96.50
205	D50A17	50-2	5/8	17	1/2, 5/8	*	1.045	1 3/8	952	120.00	126.00
206	D60A15	60-2	3/4	15	1/2, 5/8	*	1.345	1 3/8	952	140.00	148.00
208	D80A12	80-2	1	12	3/4	*	1.710	1 25/32	1916	170.00	179.00

\*2 bearings per unit

SPECIFY BORE SIZE AND IF HARDENED

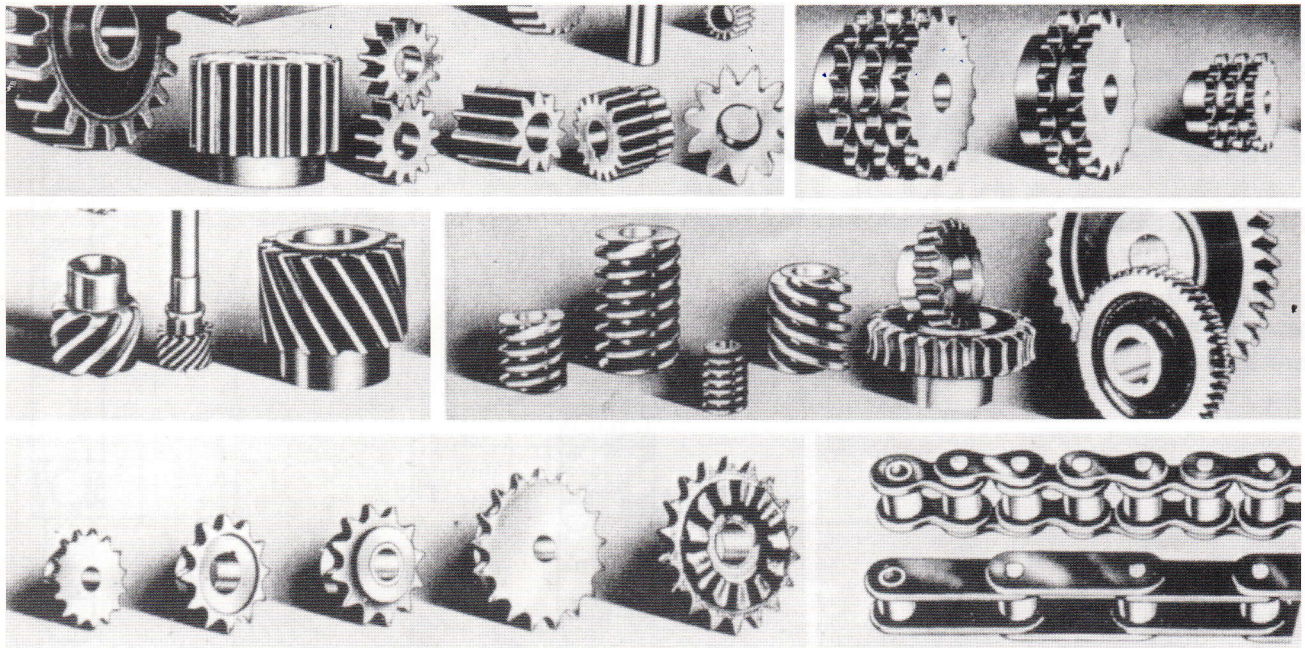
Sprockets in idlers #101 and #102 have ground faces to insure quality

IN ADDITION TO THESE STOCK SIZES, SPECIAL SIZES CAN BE FURNISHED

### WARRANTY

Dalton Gear Co. warrants products to be free from defects in material and workmanship for one year from date of shipment. The Company will, at its discretion, repair, replace, or issue credit for, any item found to be defective upon inspection at the Dalton Gear factory in Minneapolis, with transportation charges prepaid by the buyer, if such item is returned within one year of date of shipment, provided further, any attempt by buyer to repair products furnished by Dalton Gear shall void any and all warranties. If inspection by Dalton Gear does not disclose any defects within the above warranties. Dalton Gear regular repair charges will apply. No person, agent or representative, is authorized to give any warranty or make any representation contrary to the foregoing. Under no circumstances will the Company be liable for any loss, damage, expense or consequential damage at any time arising in connection with the use, inability to use, mis-use or misapplication of Dalton Gear products. DALTON GEAR MAKES NO OTHER WARRANTY, EXPRESS OR IMPLIED, WHETHER STATUTORY OR OTHERWISE, INCLUDING ANY IMPLIED WARRANTY OR MERCHANT ABILITY OR FITNESS FOR A PARTICULAR PURPOSE.



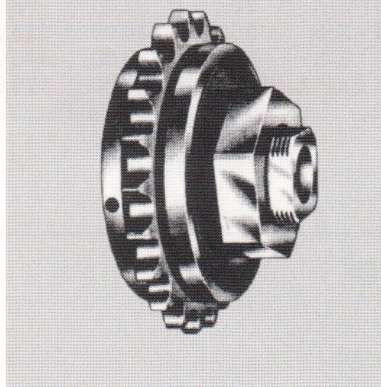


## *Other quality **DALTON®** products*

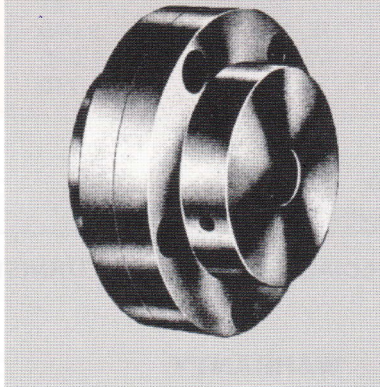
Made with fine precision equipment and inspected to ensure rigid adherence to specifications and quality standards.

**GEARS** All sizes of spur, helical and bevel gears, worms and worm gears, internal gears and splines.  
**SPROCKETS** A complete line available for immediate delivery. **COUPLINGS** **TIMING BELT PULLEYS** **TAPER LOCK SPROCKETS** **TORQUE LIMITERS** **SHEAR PIN HUBS AND SPROCKETS** **ROLLER CHAIN** **RIGHT ANGLE GEAR BOXES** Whatever your needs, you can depend on Dalton for the quality you expect, the delivery you require, and the best possible price.

OSD (torque limiter)



RIGID STEEL COUPLING



### ***The difference at DALTON is attitude...we really care!***

Dalton engineering and production personnel take real pride in producing quality products that adhere rigidly to specifications. Doing the job **right the first time** is the constant objective at Dalton.

***DISCOVER THE BIG DALTON DIFFERENCE!  
LET US QUOTE ON YOUR REQUIREMENTS.***



## **DALTON® gear company**

212 Colfax Avenue North  
 612-374-2150  
[www.daltongear.com](http://www.daltongear.com)

Minneapolis, Minnesota 55405  
 Toll Free No. 1-800-328-7485  
 FAX Number 612-374-2467